

User's Guide

Smart PRO remote

Device Assignment

Smart PRO remote is designed to work with lasertag equipment of 8th, 9th and 10th generations by LASERWAR and allows you to use up to 45 commands.

Description

The remote control is a device with a self-contained battery power supply, OLED display, front-panel control keys, an IR signal receiver/emitter and a micro-USB connector for connecting a charger or pairing with a computer.



Controls

All information is showing on the OLED display. The top line of the screen has a standard charge indicator for the built-in battery. When you connect the USB cable from a computer or charger, the special indicator will display a symbol of the charging battery.



There are six buttons of an intuitive interface under the screen. The «OK» button is to confirm the command, the «ESC» button to return to the previous menu level. Two vertical groups of buttons are below. The buttons «+» and «-» are used to increase/decrease the value of the parameters, and the buttons «up» and «down» to move the pointer through the menu items. The remote control can be turned on by pressing the «ESC» button, and it turns off automatically after the set time. The command sending is accompanied by a vibration.

List Of Commands

Remote Control main menu is contains of the following commands:

START THE GAME

START – (0x83; 0x05) new game, immediate start

DELAYED START – (0x83; 0x0C) start delayed by time configured in the game set.

RESPAWN – (0x83; 0x04) respawn, player activation. Restores health. Restores ammo if configured in the game set. Only affects «dead» players.

STOP THE GAME

GAME OVER – (0x83; 0x00) remove player from game, «kill» him

STUN A PLAYER – (0x83; 0x16) deny player to shoot for a some time

EXPLODE A PLAYER – (0x83; 0x0B) kill player by a command «explode»

PAUER – (0x83; 0x01) pause/resume game set

HEALING

FULL HEALTH – (0x83; 0x0D) full health restoration

RESPAWN – (0x83; 0x04) respawn player, reactivation. See “respawn» in “Start the game” section.

HP X2 – (0x83; 0x10) double player health to the end of the round

TEAM COLOR

RED – (0xA9; 0x00) set player’s team color to red

BLUE – (0xA9; 0x01) set player’s team color to blue

GREEN – (0xA9; 0x03) set player’s team color to green

YELLOW – (0xA9; 0x02) set player’s team color to yellow

IR POWER

OUTDOOR MODE – (0x83; 0xF9) set IR power to play outdoor (max power)

INDOOR MODE – (0x83; 0xF8) set IR power to play indoor (medium-low power)

FINE: X% – (0xA5; 0xNN) set IR power value to X. Setting by “+” / “-“

FRIENDLY FIRE

PERMIT – (0xC4; 0xFF) make players able to hit the players from the same team

DENY – (0xC4; 0x00) make players unable to hit the players from the same team

AMMUNITION

FULL AMMO – (0x83; 0x06) restore full ammo

ADD MAGAZINE – (0x8A; 0x01) add a magazine to player, if ammo is not full

DISARM – (0x83; 0x17) empty player’s ammo

CHARACTER

PERMANENT

TROOPER #1 – (0xA8; 0x01) select a preset from the loaded into the weapon

SNIPER #2 – (0xA8; 0x02) select a preset from the loaded into the weapon

GUNNER #3 – (0xA8; 0x03) select a preset from the loaded into the weapon

MEDIC #4 – (0xA8; 0x04) select a preset from the loaded into the weapon

SCOUT #5 – (0xA8; 0x05) select a preset from the loaded into the weapon

OTHER #9-#64 – (0xA8; 0x09-0x40) select a preset by number from the loaded into the weapon

WITHIN 1 GAME

TERMINATOR #6 – (0xA8; 0x06) select a preset from the loaded into the weapon

ZOMBIE #7 – (0xA8; 0x07) select a preset from the loaded into the weapon

LAST HERO #8 – (0xA8; 0x08) select a preset from the loaded into the weapon

ROUND TIME

TIME – (0xA6; 0xNN) set the round time from 1 minute to 4 hours (setting by “+” / “-“)

CLEAN SCORE – (0x83; 0x14) clear player’s game score data

X GENERATION – special commands for X-Generation equipment

Wi-Fi

OFF – (0x83; 0xFB) turn off the Wi-Fi module to play in offline mode

ON – (0x83; 0xFA) turn on the Wi-Fi module to play in online mode

VAMPIRE

OFF – (0x83; 0xFD) turn off the “vampire” mode

ACTIVATE – (0x83; 0xFC) turn on the “vampire” mode

SERVICE

DAMAGE 1 HP

RED – (0x7D; 0x00) make a shot as a red player with damage 1 HP

BLUE – (0x7D; 0x40) make a shot as a blue player with damage 1 HP

GREEN – (0x7D; 0xC0) make a shot as a green player with damage 1 HP

YELLOW – (0x7D; 0x80) make a shot as a yellow player with damage 1 HP

SENSOR TEST – (0x83; 0x15) the command for checking sensors without dealing damage to a player

DECODE IR COMMAND – receive and indicate the IR command, showing the command code and name. For shot, show ID, team color and damage.

IR BASE – work as a USB-base after connecting to PC by USB cable

ABOUT – information about the installed firmware and bootloader version

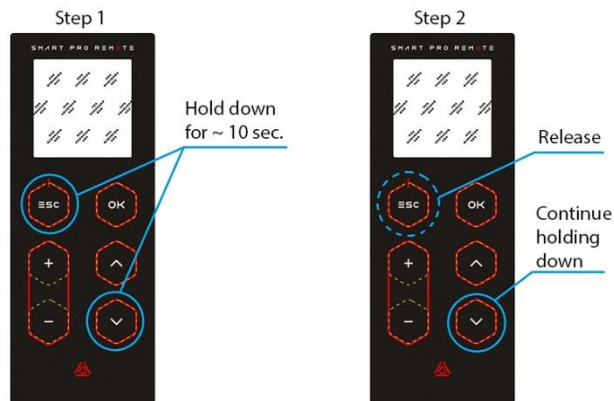
SETTINGS

- Language – (Russian/English) menu language
- Standby after – (15 sec/30 sec/1 min/5 min) time to enter the standby mode
- Vibro – (off/low/high) vibration level on sending the command
- Brightness– (10% – 100% step 10%) screen brightness
- IR range – (min/middle/MAX) IR emitter power

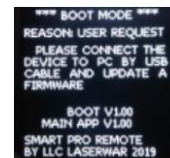
Firmware Update

To update the remote control's firmware, connect it to your computer, download the firmware file and copy it to the remote control. To do that, do the following:

- 1) Connect the remote control to the computer via a USB cable. Enter the loader mode by simultaneously pressing the "down" and "ESC" keys for 10 seconds.



Then let go of "ESC". The bootloader splash screen will appear on the remote control screen, and a new device will appear in Windows Explorer, where you will see a readme file with hints and an Internet shortcut, which will take you to the page with the description of the remote control and firmware:



- 2) Download firmware and copy the file with the extension .bin to the remote memory.
- 3) If the firmware is correct, the remote control will automatically restart with the new firmware. Для принудительного выхода из режима загрузчика нажмите 6 раз клавишу «ESC».